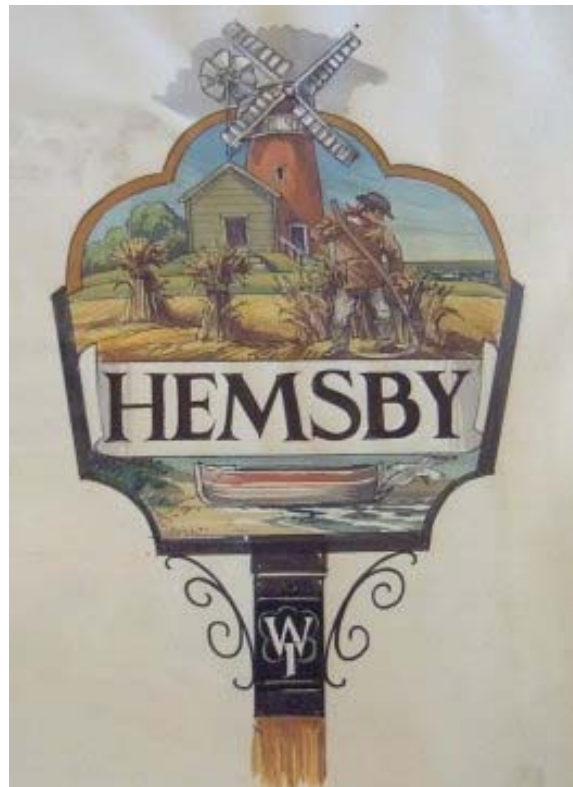


THE HEMSBY PARISH PLAN



“A BETTER PLACE TO LIVE”

WITH THE KIND ASSISTANCE OF



INDEX

1. Acknowledgements
2. Old Hemsby Photos
3. Present day Hemsby
4. What is a Parish Plan
5. Who is the document aimed at?
6. How is it funded
7. History of Hemsby
8. Village organisations
9. Our Churches and Halls
10. Industry
11. Population of the Village
12. Our School
13. Questionnaire Analysis
14. Key Issues raised
15. Responses
16. Questions for the Parish Council
17. Parish Council responses
18. Concluding remarks
19. Parish Action Plan
20. Map of Hemsby

A word on behalf of the Steering group from the Chairperson

On behalf of the Hemsby Parish Plan Steering Group, it gives me great pleasure to present the Hemsby Parish Plan to all our residents.

In 2002 a public meeting was held in the Hemsby Village Hall to outline the project. The Steering Group was formed from residents who attended that meeting, wanting to make a difference and be "The Voice of the people" of Hemsby. A community day was held in November 2003 in order to ascertain the views and issues of concern to residents. The data received on that day was the framework on which the village questionnaire was based. This was distributed to all homes and businesses in Hemsby. We would like to thank you all for taking the time to complete this document, as the response was excellent. The results have since been analysed and used in producing this the 'Hemsby Parish Plan', which we hope you will find interesting.

Finally I would like to take this opportunity to thank all the members of the Steering Group for their enthusiasm, commitment and time consuming hard work. It's not too late to get involved and we would welcome any resident who would like to join us in driving the Parish Plan forward and making Hemsby.....

"A BETTER PLACE TO LIVE"

Jo Cook
Chairperson

ACKNOWLEDGEMENTS

The Steering group would like to thank the following for their help in compiling the Hemsby Parish Plan.

Mr. Andrew Fakes, for the kind loan of photographs of old Hemsby.
Countryside Liaison & Information Point - Martham
Norfolk Rural Community Council.
The Countryside Agency, for their funding.
Hemsby Sporting Club.

The Hemsby Parish Plan Steering Group comprises the following members:

Maggie Bowler, Tony Coleman, Rosie Coleman, Shirley Coleman, Chris Cook, Jenny Cook, Jo Cook, Linda Eagle, Jenni Eley, Christine Hinchley, Ian Hinchley, Julia Lake, Margaret Lake, Colin Robinson, Peggy Sutton.

We would like to thank very much all the other villagers who assisted us at various times throughout the process.

The Steering Group would like to thank the following Hemsby businesses that kindly donated prizes for the free prize draw.

Allens Family Butchers
Mr. & Mrs. Church, Hemsby post Office
Hong Kong Chinese Take Away
Spar Food Market & Video Shop
Katrina's Hair Salon
Shimmers Tanning Shop & Nail Bar
The Old Station House, Bed & Breakfast
Teletronics
Mrs. Brooks, The Craft Shop
Chris Cook, Green Garden Services
Natural Health Pharmacy

What is a Parish Plan??

In November 2002 the Government published a white paper which stated that rural communities should have a greater say in the decisions which may effect them. Parish Plans are part of the "Vital Villages" scheme run by the Countryside Agency, which gives grants to help rural communities take action on many issues relating specifically to them.

Over the last few years many communities have worked to improve the quality of life in their village or area, and have found local needs are best met by local initiatives. To date well over 1500 communities in England and Wales have completed surveys to find out how the residents feel about their village, parish or small town.

Who is the Document aimed at??

Primarily produced as a Community Strategy for our Parish Council, it incorporates views and concerns into planning action that can be undertaken locally. In addition to our Parish Council, the Borough and County authorities will need to become involved. It has been known for instance, for a planning enquiry to ask if a Parish Plan has been compiled and the outcome with regards to specific issues. A Parish Plan can open up a dialogue on local plans and policies and produce funding for local projects.

How is it all funded??

Funding for this project has been provided by grants from the Countryside Agency and also with a contribution of 25% from our own Parish Council. All the time given by the Steering group has been on a voluntary basis.

Hemsby and our History.

Hemsby was mentioned in the Domesday Book as a hamlet, however our village history goes back over 1200 years to Viking origins. The Danes settled in East Anglia after sailing over in their Orm skibs or Serpents, which were naval vessels. The largest Danish settlement of that time, the East and West Flegg region, was made up of 24 parishes each under a Headman. The word 'by' is of Danish origin and means 'home or village'. It follows that all place names ending in 'by' translate as the home of 'xxx', hence Hemsby, the home of Hem who was probably the Headman of the village.

Until the 20th century, the main employment in the village was based around fishing or agriculture, with a bit of rum smuggling thrown in.

The village was connected to the railway system in 1887. After the war, as the holiday industry built up in the village, the train brought holiday makers from all parts of the country. The line was run by the Midland and Great Northern, known locally as "The Muddle and Go

Nowhere" In the 1950's the use of the railway declined as motor cars became common place. The railway closed down in 1959

Tourism helps the Hemsby's economy during the summer when our local population of about 2500 swells to 22000 and more. Holiday makers flock to Hemsby's beautiful sandy beaches and occupy the many camp sites, chalets and caravan parks.

The village celebrates its old roots in the fishing industry by holding the Long Shore Herring festival when herrings are cooked and eaten on the beach with stalls, amusements and all necessary for a fun day out. and twice a year the village rocks to the rhythms of Rock and Roll, with one of the country's largest R & R festivals

Although the village of Hemsby is split into three areas i.e. Hemsby Village, Hemsby Holiday area and Newport, we are very much one community.

Our village Organisations

Hemsby is home to many organisations and groups whose meetings are held in various locations around the village. The Village Hall on Waters Lane and the Church Barn Rooms on The Street are in constant use. We also have the Social Club and Sporting Club, both of which donate time and money for the good causes in the village.

'The Signpost', a list of the telephone numbers of all our local clubs, organisations and groups is attached to this 'Plan'. We hope you to contact them for more information about their activities.

Our Churches and Halls

St Mary the Virgin Parish Church

Our Parish Church, dedicated to St. Mary the Virgin, stands proud in the centre of the village. Historically some parts can be dated back to 1660 when the bells were hung. It was restored in the heyday of Victorian fervour when all the seating was installed. The pews are said to have been sawn from one Oak tree grown in Filby, with the joinery undertaken in the Barn rooms. Mark Kichenside is our vicar with Bertie Murrell and Carol Lankester our churchwardens.

The Barn Room or Church Hall opposite the Church is used by many of our village clubs including children's activities, Church fund raising Coffee Mornings, Quiz's, the Mothers Union and St Mary's Monday Club.

Methodist Church

Built in 1879 the Methodist Church is on Martham road at the corner of Taylors Loke. The minister is the Rev. Chris Shreeve, and services are at 11am every Sunday. Coffee mornings are run from Easter to October on Thursday mornings at 10am. The proceeds are donated to the National Children's Home. Other services and events are advertised locally.

For more information contact Rev. Chris Shreeve on 01493 740237 or Ray Pentelow on 01493 732112.

Evangelical Congregational Church

Overseen by Mr. Frank Little this church was founded in 1860 by five members of the Martham Baptist Church with completion of the building in 1863. Congregationalism dates back to the Reformation and was practised by the Pilgrim Fathers.

The church is currently being refurbished with the intention of allowing more community based church functions. This will be an additional asset to the village.

Hemsby Village Hall

Hemsby Village hall is the base for the Womens Institute, Line dancing, Country & Western and Old Tyme dance clubs, Youth club, Bingo, Bowls, Metal detectors, GYBC classes and computer classes

Employment

Local businesses offer mainly seasonal employment opportunities for local people. During the tourist season this helps the village through the extra revenue brought in which in turn helps ensure the long term future of small and family run businesses.

Our Village School

Hemsby First School located on School Loke is an Edwardian building with some modern additions. Head teacher is Julia Smith and the school caters for children from 5 to 8 years old. In 2006 the school is due for expansion and will become a Primary school; catering for children from 5 to 11 years of age.

The school also accommodates a preschool group from 3 years of age.

The Parish Questionnaire

A parish Questionnaire was delivered to, and collected from approximately 1300 households in the village. To ensure that any questionnaires, which were unable to be collected by hand, were included a central collection point was set up at the Post office for two weeks after the collection date. 672 Questionnaires were returned giving a 51.7% return rate, for which we thank you all.

Due to page number restrictions we can only provide you with a consolidated version of the data obtained from your responses to the questionnaire. A full and complete draft of the Hemsby Parish Questionnaire can be requested from the Parish Council Offices. Contact the Parish Clerk Shirley Weymouth on 01493 731625.

QUESTIONNAIRE ANALYSIS

The comments in this document are some of the many made by residents who have completed the questionnaire and are not given as fact, or the opinions of the Steering Committee. Each and every comment made on the questionnaire has been recorded in a master document, which is available on request from the Parish Clerk

General information on Hemsby inhabitants (Covers Questions 1, 2, 3, 4, 8 and 13)

These questions were asked in order to get an overall feel for the mix of people in Hemsby, their lifestyle and their transport options. No further action is necessary in this category.

As stated, 672 households responded which covered 1,545 people with an overall ratio of 1 male to 1.09 females and in the following age ranges:

<i>0 - 4 years 3.5%</i>	<i>5 - 10 years 5%</i>	<i>11 - 15 years 5%</i>
<i>16 - 17 years 2%</i>	<i>18 - 24 years 6.5%</i>	<i>25 - 44 years 18%</i>
<i>45 - 59 years 24.5%</i>	<i>60 - 64 years 10%</i>	<i>65 - 74 years 15%</i>
<i>75 - 84 years 8.5%</i>	<i>85+ years 2%</i>	

Of the 672 households, 34 had lived in the village for less than 1 year, 159 for 1 - 5 years, 146 from 6 - 15 years, 157 from 16 - 25 years, 127 from 26 - 50years and 60 for over 50 years.

Of homes in Hemsby 50.5% were privately owned Bungalows and 19.5% were privately owned Detached houses. The other 30% were divided between rented accommodation 6.5%, Local authority accommodation 3.5%, Other privately owned properties e.g. semi detached, terraced, flats, sheltered housing and other 16.5% with Shared ownership 3.5%.

The total transport usage for work, leisure, etc., for all households was as follows:

<i>Private car</i>	70%	<i>Public bus</i>	12%	<i>Private bus</i>	3%
<i>Taxi</i>	less than 1%	<i>Bicycle</i>	3%	<i>Motor Cycle</i>	less than 1%
<i>Train</i>	less than 1%	<i>Walking</i>	8.5%	<i>Other</i>	3% (Dog walking)

Educational Facilities (Covers Questions 5, 6, 7, 27, 28 and 29)

This section cover the educational facilities used by your children and the facilities you would like to see provided in order to improve the quality of services in Hemsby.

Those attending educational facilities represented 17% of the respondents as follows:

<i>Playgroup</i>	11	<i>Nursery School</i>	22	<i>Primary School</i>	43
<i>Middle School</i>	52	<i>Secondary School</i>	57	<i>Special needs</i>	1
<i>Other</i>	1	<i>Sixth Form College</i>	19	<i>University</i>	23
<i>Training Courses</i>	38				

Of children under 16 at school who found they were unable to attend after school activities, 6 cited expense, 18 cited transport difficulties and 10 cited distance as being the reasons for non-attendance.

To the question regarding educational needs in Hemsby 1,382 responses were received requesting facilities as follows:

<i>Nursery School</i>	115	<i>Playgroup</i>	110	<i>More Registered child minders</i>	72
<i>After school clubs</i>	240	<i>Holiday Play Schemes</i>	194	<i>Computing classes</i>	232
<i>Languages</i>	127	<i>Crafts</i>	164	<i>Woodworking</i>	76
<i>Other Adult classes (included in Item 15 as more appropriate)</i>					54

The following venues were suggested

<i>Village Hall</i>	- 558 (55%)	<i>Barn rooms</i>	- 213 (21%)	<i>School</i>	- 227 (22.5%)
<i>Other</i>	13 (1.5%)				

With best times for classes being

<i>Morning</i>	- 151 (19%)	<i>Afternoon</i>	- 176 (22%)	<i>Evening</i>	- 471(59%)
----------------	-------------	------------------	-------------	----------------	------------

Your comments have been summarised and included the following:

*As a family our main concern and expense is covering the cost and transport of our children's activities.

*Many parents have problems with access and affordability for childcare especially during school holidays and school closure days and ones that are open for the hours people work i.e. not 10am to 3pm x 5

Other educational facilities you requested were:

- Mathematics English Cookery Electronics
- Card making Textiles Relaxation Embroidery
- Flower Arrangement for elderly residents Homeopathy
- More 'Futures' Courses

Other venues for classes included:

- Scout hut Playing field & Pavilion

Shopping Facilities (Covers Question 45)

In answer to many comments re the shopping facilities in Hemsby we sought your rating of some of the existing facilities. Not all shopping facilities were included in the questionnaire - only those specifically mentioned by those participating in the 'fun day'.

The Spar Supermarket was commented on by 1,085 people who have used its services, of which 18.5% found the facilities to be poor with 81.5% considering that the services were 'good' or 'acceptable'.

The Post Office Stores was commented on by 1,171 people who have used its services, of which 5.5% found the facilities to be poor with 94.5% considering that the services were 'good' or 'acceptable'.

The Fast Food/Takeaway services was commented on by 835 people who have used its services, of which 11.5% found the facilities to be poor with 88.5% considering that the services were 'good' or 'acceptable'.

The Bakery was commented on by 876 people who have used its services, of which 15.5% found the facilities to be poor with 84.5% considering that the services were 'good' or 'acceptable'.

The Cash Dispenser in the Spar Supermarket was commented on by 571 people who have used its services, of which 36.5% found the facilities to be poor with 63.5% considering that the services were 'good' or 'acceptable'.

The Garage was commented on by 929 people who have used its services, of which 12.5% found the facilities to be poor with 87.5% considering that the services were 'good' or 'acceptable'. People were however confused as to whether 'garage' meant petrol station or MOT on Post Office crossroads. We have tried to separate comments as appropriate.

Your general comments included:

- Prices are high, especially in summer.
- There is a need for free cash dispenser (ATM).
- Opening hours could be extended.
- Better wheelchair access to the post office.
- X-roads garage - messy and with dangerous parking.
- Better litter bins outside shops

Individual shops were commented on:

- Post Office - generally excellent but privacy at post office counter and disabled access were concerns.
- Spar Supermarket - mostly dissatisfied with range, price and staff attitude as well as unsafe steps and congested parking.
- Butcher - very satisfied
- Pharmacy - excellent
- Bakery - Excellent but could stay open later
- Hairdressers - very good
- Takeaway's - Reasonably good, slightly expensive and an Indian takeaway would be welcome.

Some individual comments included:

- There is no vet in Hemsby or surrounding villages
- Parking area behind Spar should be 'one way' only
- Outside the Spar shop the concrete steps are dangerous, you have large steps or slopes. I think it should be all sloped, the concrete steps are very dangerous

Transport (Covers Questions 9, 10, 11, 12, 18 and 19)

Public Transport

Public Transport in rural areas is always a contentious item.

When asked about the main method of transport for work, leisure, etc., the response from 1,352 people showed that 12% used the public bus service.

Of these, those who experienced difficulties with the service was a substantial 34%.

To the question about those services provided by the public Bus Company, your responses were as follows:

The various aspects of the bus service received 3046 responses of which 31.5% considered the services to be Poor.

'Cost' & 'Access for those with disabilities' were particularly highlighted with cost showing 43% and Access showing 64% of respondents considered the service to be Poor.

Other aspects received the following Poor ratings:

Route 25%

Timetable 25%

Reliability 16%

Bus stop location 24%

When asked about support for a community bus there was support by 482 people although there seems to be a bit of confusion as to the service a community bus would provide.

Your Comments included:

Buses:

- The services most wanted were, in no particular order :-
 - Disabled access,
 - Stops along Common/Martham Roads,
 - Direct bus to Yarmouth starting early enough for workers
 - Winter bus - Newport/Beach road area
 - School buses to Caister/Martham extra to service bus
 - Direct service to Norwich
 - Smaller, more frequent sprinter buses outside of rush hours
 - Joined up bus/train services
 - Late night bus from Yarmouth

Community buses:

- The main requests are:-
 - 2 hourly minibus from beach estates to Hemsby village, Tesco, Asda, Potter Heigham, Wroxham
 - And a bus to local tourist attractions

Some individual comments included:

Buses

- People cannot use bus shelter in Kingsway, always young boys and girls sitting in shelter which worries old people waiting for buses
- The village has a lot of elderly - young people and the walk to the stops is too far. Buses should detour through housing areas more
- You can't get a bus in mornings as they go on School runs, sometimes wait an hour

Community Bus

- Why not encourage large out of town supermarkets to provide OAP & Disabled shopping bus service
- Regular short runs between villages. A lot of people have relatives close by but if you are elderly or on your own it's a long walk from one village to another
- Could only use if had wheelchair access
- I do not know what community bus service is. What's the difference between a bus service and a community bus service?

Voluntary Car Service

Voluntary Car services do not appear to have much support with 80% not being prepared to 'car share' and 73% not being willing to be a passenger in a 'car share' service.

Your Comments included:

Incidentally what do you think of car sharing? Have you seen this website: www.carshare.to

Traffic Matters (Covers Questions 14, 15, 16, 17, 20, 21 and 22)

'Traffic matters' is intended to consider parking of your vehicles, parking problems relating to other road users, facilities and controls, danger spots, speed limits and road signs.

Parking

With regard to personal vehicles 92% parked their cars either in their own garage or on their driveway, 4% parked on the road and 4% parked 'off road'.

Those who experienced parking problems at their home included 42% who experienced other cars blocking their entrance, 11% experienced difficulty finding parking places, 26% had problems with tourist traffic blocking roads and 21% had other problems.

With regard to parking facilities in Hemsby 22% considered they were Poor while 18% found them to be good with the remainder considering them reasonable.

With reference to parking controls e.g. a traffic warden, 62% were against any such proposal. Traffic controls (wardens) are really only wanted

- during the summer in Beach Road and Shopping areas
- School dropping off and collection times

One villager volunteered to act as an unpaid warden

Danger spots

When asked about danger spots in the village residents were very clear with the following:

Post Office crossroad - 69%

Pit Road - 13%

Kingsway - 26%

The Street / North Road junction - 29%

Parish Church - 19%

Your comments included:

Post Office crossroads

- A mini roundabout is an urgent necessity

North Road

- There are major concerns about:-
 - Parking for doctors surgery
 - Parking for Kings Head
 - Speeding cars and motorbikes

The Kingsway, North Road, Beach Road junction

- There are major concerns here with suggestions including:-
 - Pelican crossing on Winterton Road
 - some form of traffic control for cars turning in and out of Beach Road

- some form of traffic control for cars turning in and out of The Street/North Road

Waters Lane

- A majority were concerned about the playing field entrance, especially with the new estate
- There was also concern about the junction with Common Road/Taylors Loke/Martham Road

Ormesby Road/The Street

- Bad parking outside the garage and blind corners are worrying.

Main Road to Yarmouth

- This is very dangerous when cars stop to turn in to Esso garage - a traffic island is needed.

Mill Road

The main concerns were: -

- Lack of pavements
- Lack of safety at the Martham Road junction - especially for children dismounting the school bus in the field gateway.

Winterton Road

The main concerns were: -

- Cars coming blindly out of drives
- A fence blocking the view to the right from Beach Road
- Lack of a pavement on the West side

Newport junction

- A lot of people found this dangerous as a crossing point and needed attention

Martham Road

The main concerns were: -

- School bus (as Mill Road)
- Some residents would like the old railway bridge flattened

Pit Road

The main concerns were: -

- Parking outside the school
- Cars going against the one way system
- Blocking driveways

Taylors Loke

The main concerns were: -

- Several people concerned about blind bend
- Lack of pavements
- Several would like it to be 'one way' from North Road to Waters Lane

Other comments included:

- Coming out of Meadow Rise onto North Road with a frame or disability vehicle to get to St. Mary's Close is very dangerous
- Heading into Hemsby from Winterton direction, cars coming out of Beach Road not stopping. I have noticed that there is a blind spot caused by the boundary fence.
- The old railway bridge needs speed ramps both sides and a 30 flashing sign

Speed limits

Residents responses to speed limits was mixed:

39% felt they should be more rigorously enforced, enforced

30% felt they were adequately

8% wanted speed limits increased in certain areas certain areas

19% wanted them reduced in

4% wanted other solutions

Your comments included:

Speeding

Speeding was a concern throughout the village, although 56 residents felt Kingsway should be returned to its original 40-mph limit.

Other comments included:

- No point adjusting the speed. They would not take any notice. The Street is used as a race track
- 30 mph is adequate if enforced
- Beach Road - Humps are a pest, these should be removed
- Speed limit of 30mph should start the Martham side of the bridge on approach to village so traffic is slowing down before Collis Lane and going over the bridge

Road signs:

Generally 87% of respondees considered the road signs were adequate.

Residents wanted the following areas addressed:

- Warning at Post Office Crossroads
- Signs cleaned and hedges cut round them

Your comments also included:

- Notice in Winterton Road for Beach Road not sited properly.
- We have more traffic coming up Vine Close as the sign for the Beach looks like it's up our street.
- The council have taken the sign posts down showing the way to Sea Palling and Cromer, so visitors don't know the way or how many miles away these places are, and direct them all to Great Yarmouth

Road Safety (Covers Questions 23 and 24)

Under the heading of Road Safety we were considering the needs of pedestrians and cyclists as against car users.

Pavements were requested in the following areas:

Post Office to Hall Road - 45%

Taylor's Loke - 18%

Newport Road - 13%

Beach Road - 11%

others - 12%

Residents wanted the following areas addressed:

- Post Office to Hall Road
- The Street
- Mill Road
- Winterton Road
- Taylor's Loke
- North road

Your comments also included:

- The new pavement in Winterton Road can hardly be walked upon its so uneven
- Kingsway pavement is too high for the elderly
- Lack of suitable pavement Kingsway to Post Office. Need to criss-cross The Street with limited visibility and slow pace due to disability. This is a major difficulty for me

Generally

- There were also concerns about
 - Dog fouling Overgrown hedges Splashing from puddles
 - Disabled friendly kerbs Cars parking on pavements

Paths & Lighting:

Resident's response to the question of which facilities they would like to see in Hemsby were as follows (as a percentage of the whole questionnaire):

- | | | |
|--|------------|--------------------|
| • <i>Cycle path (Hemsby to Winterton, Hemsby to Martham)</i> | <i>29%</i> | <i>450 persons</i> |
| • <i>More street lighting</i> | <i>26%</i> | <i>396 persons</i> |
| • <i>More pavements</i> | <i>25%</i> | <i>379 persons</i> |
| • <i>More footpaths</i> | <i>24%</i> | <i>368 persons</i> |
| • <i>Pelican crossings</i> | <i>21%</i> | <i>325 persons</i> |
| • <i>Cycle paths</i> | <i>18%</i> | <i>273 persons</i> |
| • <i>Roundabouts</i> | <i>16%</i> | <i>255 persons</i> |
| • <i>More sensitive street lighting</i> | <i>16%</i> | <i>245 persons</i> |
| • <i>Dropped curbs</i> | <i>9%</i> | <i>143 persons</i> |
| • <i>None of the stated facilities</i> | <i>7%</i> | <i>112 persons</i> |
| • <i>Traffic islands</i> | <i>5%</i> | <i>77 persons</i> |

Your comments included:

Pavements -

- A safe place to cross from Martham Road to North Road - blind bend wherever you try and cross at bend.
- Maybe pavement on North Side of Martham Road from bungalow towards farm and North Road as it would be much safer to cross road well away from road junctions and bend

Cycle/Foot paths -

- Well lit cycle paths to surrounding villages would make safe travel for both cars and bikes - particularly to Martham for school children to use in the summer - thus relieving pressure on buses
- Hemsby to Caister, need to be well lit in the winter

Street lighting -

- Most villagers want street lighting in their own particular road, although there was a minority who said we have too many lights already.
- Existing street lights not always working or obscured by hedges or trees, etc.
- The place where most want better lighting is
 - Newport Road and it's junction with Kingsway

Crossing -

- Pelican or zebra crossings are requested in the following places:-
 - Kingsway shops to Beach Road
 - Bell pub to derelict shop (for school)
 - Cemetery to shops
 - Barn Rooms to Church
 - Post Office crossroads
 - Martham Road to North Road
- If crossings are not possible, traffic islands to give safe refuge in the middle of these roads would be welcome

Utilities (Covers Questions 25, 26)

Your opinions were canvassed regarding the efficiency of the Utilities that you used.

Your responses were as follows:

Regarding flooding problems with surface water or storm drains your responses showed that a substantial majority of households experienced no problems; however a significant number did have problems which appeared to be in specific areas of Hemsby with 47 households experiencing many problems and 100 households experiencing some/few problems.

Your comments included:

Refuse collection -

- Good
- Not enough recycling

Other -

- Why no gas supply?
- Dog fouling bins needed along Newport Road to Cottages and The Marrams
- Wheelie Bins would be an advantage

With regard to other utilities the following showed the services you considered being Poor in quality

<i>Dog fouling bins - 63%</i>	<i>Public toilets - 41%</i>	<i>Roadside maintenance - 37%</i>
<i>Winter weather service - 37%</i>	<i>Street cleaning - 33%</i>	<i>Street lighting - 21%</i>
<i>Refuse collection - 4%</i>	<i>Mains water - 3%</i>	<i>Mains electricity - 3%</i>

Housing (Covers Question 30)

Of responding households it was quite clearly stated that 59% did not want to see any further development in the Village.

Your comments included:

a)No further homes -

- As there is no adequate surface water drainage, no further housing development should be allowed to take place. There is frequent flooding after heavy rain when water runs off the School playground and the Bell car park into properties in School Loke. Flooding at the end of Hall Road brings up condoms and sewage. This could get into Ormesby Broad via the dykes
- More houses of a mixed kind if they can facilitate schools, Medical Treatment, Transport and Sewage etc.

b)Homes for young people -

- More homes built for first time buyers, for the youngsters who don't want to leave the village
- Housing should take into account for people born and bred in Hemsby, so they don't have to move out to get a house, especially council housing

c)Homes for elderly -

- Locals only

However the remainder did indicate that they would like to see further development as follows:

<i>Homes for young people - 24%</i>	<i>Small family homes - 19%</i>
<i>Homes for the elderly - 13%</i>	<i>Bungalows - 13%</i>
<i>Homes for the disabled - 12%</i>	<i>Homes for single people - 11%</i>
<i>Large family homes - 5%</i>	<i>Executive homes - 3%</i>

Medical Facilities (Obtained from Questions 31 and 32)

Responses to the questions regarding Hemsby health services showed significant dissatisfaction as listed here:

Medical Centre:

The percentages of persons dissatisfied were as follows:

Doctors - 11.5% ex 1,124 responses

Triage system - 37.5% ex 1,040 responses

Dispensary - 10% ex 603 responses

Privacy in Centre - 40% ex 825 responses

Dentist - 8.5% ex 823 responses

Others concerns:

Chemist - 2.5% ex 1,120 responses

Health Visitor - 5% ex 197 responses

Counselling Services - 39% ex 51 responses

Physiotherapy Services - 20% ex 226 responses

Maternity Care - 7.5% ex 117 responses

Loan of medical equipment - 15% ex 74 responses

Chiropody - 35% ex 114 responses

Ambulance - 9% ex 197 responses

Disabled help - 33% ex 105 persons

Elderly help - 35% ex 126 responses

Support for blood donor sessions was 465 in favour

Support for alternative therapies was 383 in favour

Your comments included:

Dispensary at Medical Centre

- People who live in Hemsby have to use the pharmacy at the chemist; we can not use the dispensary.

Dentist -

- Restricted registration a problem

Chiropody -

- Facility should be available for all.

Privacy in doctors reception area -

- More privacy needed at reception desk

Additional services that you would support -

- Well women clinic with Mammogram service, like they used to have at the surgery.
- I would use a homeopath, a herbalist, a chiropractor and a healing/meditation centre, especially a Buddhist one. Also if not already in existence I would support a volunteer centre which acted as a hub for community action
- Reflexology

Policing (Obtained from Questions 33, 34, 35 and 36)

Concerns had been raised as to the levels of criminal and anti social behaviour in Hemsby. Less than half of people responding (45%) said they had not experienced any criminal or acts of anti social behaviour. However significantly:

Vandalism 21% Drunkenness 13% Theft 9.5% Burglary 7% and Drugs 4.5% were raised by villagers. 307 households said they would like to participate in a neighbourhood watch scheme.

Related to the above 62% of responses considered the police coverage of Hemsby to be Poor. As a result the questionnaire showed that:

*48% were looking for a greater police presence
41% wanted some form of Community policing
30% wanted better consultation between police and locals
21% wanted CCTV coverage
1% felt some other measures were needed*

Your comments included:

How do you regard the Police coverage in Hemsby to be?

- What Police coverage?
- Haven't seen any patrols or presence

Would you like to join a Neighbourhood/Home watch Scheme?

- If we had the Police coverage we pay for, a scheme should not be necessary
- Already have home watch

Which, if any, of the following crimes and anti social behaviour have affected you in Hemsby?

There were major concerns about the following: -

- Vandalism - petty and more serious
- Litter thrown into private property
- Urinating on properties in Beach Road
- Dog fouling

Other comments included:

- There isn't a place where young people can go on their own. As children grow up they need a social life separate from parents and younger children
- Street lighting in areas not well lit such as Marrams, St Mary's Road, Fakes Road etc. would act as a deterrent

Do you think that any of the following measures are needed?

- **CCTV -**
No good unless action is taken
- **Better consultation between police and locals -**
Especially weekends and when holidaymakers present

Environmental issues (Obtained from Questions 37, 38, 39, 40, 41, 42, 43 and 44)

Environmental issues were intended to cover such diverse items as Recycling, Waste disposal, derelict buildings, Litter, Coastal Erosion and Countryside matters generally.

A significant number of people stated that they did not know where the existing facilities were located.

Based on the questionnaire responses the following facilities were used or would be used if provided:

Existing:

Bottle bank - 47%

Paper Bank - 41%

Can Bank - 28%

If provided:

Plastics Bank - 27%

Cardboard Bank - 26%

Clothes Bank - 24%

Compost Bin - 16%

In addition 89% of those responding said they would be prepared to keep certain items separate from normal refuse if a separate collection was made.

Derelict Buildings

Some villagers were all concerned about the following sites to a greater or lesser degree: -

- Shop near the church has been looking a mess and getting worse since empty
- The Barn Room is in need of refurbishment, the appearance from outside is quite an eyesore
- With houses being so sort after, why should buildings be left derelict?
- The garage at Post Office cross roads
- Encourages vandalism, children playing in buildings dangerous

Litter

A litter problem was identified by 59% of respondents; - practically everywhere in the village has a problem with litter, which gets worse in summer and at weekends.

Your comments included:

- It was felt that at regular intervals through the day and before closing, shops, takeaways, etc., should clean all round their premises.
- More bins, regularly emptied, would help.
- The area outside the village Hall is never cleaned - who has responsibility for this?
- People should take a pride in the village and not throw litter, etc.
- CCTV, policing, anti-litter fines, etc.

Coastal Erosion:

Concern over coastal erosion was expressed by 70% of respondents.

Countryside matters:

Responses to each question on rating our existing countryside found the following to be Poor

Planting - 41% *Ponds - 23%* *Dunes - 22%* *Ditches - 20%*
Banks - 18% *Hedges - 15%* *Recreation Areas - 11%*

In order to improve the countryside respondents cited the following as a requirement:

Clean up the beach - 21% *Keep hedges short & tidy - 21%* *Tree planting - 18%*
Planting of verges - 17% *Plant more hedges - 13%* *Village pond - 10%*

To make the village more attractive respondents cited the following:

Remove litter - 16% *Keep verges mown & tidy - 16%*
Stop vehicle damage to verges - 15%
Signpost paths & Bridleways - 9% *Open more footpaths & bridleways - 9%*
Repair gates, stiles & Bridges - 7% *Reduce traffic - 7%*
Remove unnecessary signposts - 5% *Let verges grow wild - 4%*
Make paths accessible to those with disabilities - 1%

How do you rate the following features of the countryside in and around Hemsby?

Planting-

- Hanging Basket, Flower beds would be nice

How would you like to see the quality of the countryside in and around Hemsby improved?

a) Plant more trees-

- Yes but not Leylandii
- Do away with trees in Kingsway and Winterton Road

b) Plant more hedges-

- Plant more hedges along Kingsway and sort out the eyesore of rubbish and scruffy fencing. This looks off putting as you drive into Hemsby.

List any other items for improvement of the quality of living in Hemsby -

- More community events
- Sort out the play areas on Barleycroft estate. Some equipment has been removed and others are unsafe or the ground is a mud hole
- More bulbs - flower displays would be nice
- I would like to see the village kept neat and pretty like Filby and Winterton, who take pride in their village, so they enter Village in Bloom. More hanging baskets. During the summer season I think Beach Rd gets more attention than the rest of the village where most residents live - perhaps sponsored by Beach Road business?
- We need a School Crossing Lady. .
- Make sure road sweepers - cleaners do their job properly and not ignore items 6 inches outside of what they consider their area of work, and sweep side streets too.
- The Main road back of Barleycroft poor outlook for village, fences down, rubbish and grass verge needs a good clean up.
- Brighten up the entrance to the village at the moment it just looks bland.
- The prettiness of the village could be improved communally. Id like to start a national plant a bulb day, where people pay a £1 for a bulb to be planted by themselves on a public verge, all different types of bulbs which would naturalise. Additionally, I believe loads of gardeners would be happy to contribute cuttings of plants to grow in public places.

What do you think could be done with local roads, lanes, paths, etc, to make the village and its environment more attractive?

a) Keep roadside verges mown and tidy -

- When grass cut please collect the cuttings

b) Let roadside verges grow for wildlife-

- Only if properly and sensitively managed!

c) Make paths accessible to those with disabilities -

- Yes some, not all as impractical in some areas

Recreational issues (Obtained from Questions 48, 49 and 50)

In considering the recreational facilities in the village the playground facilities for young people was the first consideration. Out of 892 responses to this question only 6% thought the facilities were Poor however a number of comments were made that should be considered.

Are the facilities in the Children's Equipped Playing Area satisfactory?

Your comments included:

What is in the playground is generally satisfactory apart from the roundabout, which should be replaced. However, there is a great need for more facilities for older children/teenagers, which might, in turn, favourably affect vandalism, etc., by bored youngsters. Litter and graffiti is a problem but more bins and a warden patrol would help.

Improvements suggested include:

- More swings
- Cycle track round field & ramps
- Skateboard park

Other comments included:

- The metal grid when you enter and exit the playground traps the wheels on most pushchairs. Also can be very muddy and slippery just getting to the entrance. It would be nice not to see teenagers hanging around during summer holidays stopping young children from using the playground equipment
- Much improved in the last few years, great now for children to play on. There are still people taking their dogs on the field and messing everywhere. Not nice where children run and play
- There are also several requests for the return of the playground equipment on the Barleycroft.

What other Clubs/Activities would you attend in Hemsby if they were provided?

Internet club / café-

- Good idea

Shooting-

The sound of gunfire permeates throughout our home from a shooting range at Ormesby and from local farm shoots. Its not something you need to have in life. We would oppose a Shooting Club in Hemsby

Self Defence-

- It would depend on method and school

Other-

- Healing and Meditation
- Gardening
- Conservation volunteers
- Tennis
- Philosophy

Do you think the Recreation and Sports facilities are adequate for the needs of Hemsby?

Your comments included:

- More meeting places for young people to gather and socialise
- Visits and trips for handicapped
- I am not aware of any recreational or sports facilities in Hemsby for the older person

- Most facilities are for the elderly we need more for the young people
- With the village growing and more young people needing interests there should be training facilities for athletics
- Hemsby needs more events to bring the community together i.e. Village Fare or Carnival.
- Sports facilities are good for football, but the cricket club could do with more parish support. One tennis court for the whole village isn't very good.

Recreational facilities requested:

In considering recreational facilities generally 53% of the responses considered Hemsby was adequately covered for their needs however

In considering recreational facilities required by older children and the adult population the responses to the various options put forward were as follows:

17% of those questioned said that nothing was required in addition to the facilities already available. Of the remainder the requirements, based on the overall questionnaire respondents were for:

<i>Village Library</i>	28%	<i>Swimming pool</i>	24%	<i>Fitness gym</i>	23%
<i>Walks</i>	14%	<i>Computer classes</i>	13%	<i>Dance classes</i>	10%
<i>Pensioners club</i>	9%	<i>Farm visits/trails</i>	9%	<i>Yoga</i>	8%
<i>Self defence</i>	7%	<i>Internet club/café</i>	7%	<i>Off road cycling</i>	7%
<i>Horse riding</i>	6%	<i>Art club</i>	6%	<i>Music class</i>	6%
<i>Road cycling</i>	6%	<i>Nature study</i>	6%	<i>Fishing</i>	5%
<i>Drop in centre</i>	5%	<i>Skateboard Park</i>	5%	<i>Photography</i>	4%
<i>Sightseeing</i>	4%	<i>Shooting</i>	4%	<i>Youth club</i>	3%
<i>Squash</i>	3%	<i>Astronomy</i>	3%	<i>Am Drama</i>	3%
<i>Drama class</i>	3%	<i>Gardening</i>	<1%	<i>Scrap booking</i>	<1%

Information about village life (Obtained from Questions 46, 47 and 51)

One of the aspects of village life that was very evident from the comments that were raised at the Fun Day and after was the apparent lack of information about virtually all aspects of activities, etc., within Hemsby.

The questionnaire found that 42.5% of responses felt that the information available was Poor while only 10.5% felt it was good.

When asked where residents got the information they did have the vast majority got their information from the two local newspapers. The Advertiser informed 44% and the Yarmouth Mercury 33%.

The next important source was the Church magazine with 17%.

Obviously the dissemination of information is a problem of massive importance which as a village, Hemsby is failing spectacularly.

A breakdown of sources is:

- The Barn room, Women's Institute, Eastern Daily Press, Posters around village, Word of mouth, Hemsby Social Club, Notices at the Village Hall, Notice boards, Notice boards at Parish Office, Grapevine, Hairdressers, Post Office, Roadside / Verge signs, Chip shop Notice Boards, Social Club

When asked what information services were required the result was fairly clear with:

<i>Parish Newsletter</i>	<i>27%</i>	<i>Citizens Advice</i>	<i>20%</i>
<i>Community Notice Board</i>	<i>18%</i>	<i>Internet web site</i>	<i>13%</i>
<i>Benefits advice</i>	<i>12%</i>	<i>Employment services</i>	<i>8%</i>
<i>Family Planning</i>	<i>2%</i>		

Your comments included:

- Information tends to be disjointed with lots of notices stuck up everywhere
- The write up for Hemsby in the Mercury is abysmal. 4 - 5 lines usually. All other villages have paragraphs about what is going on
- Internet website- There is one but it is underused and poor

Parish Council (Obtained from Questions 52, 53, 54, 55 and 56)

The Parish Council was the subject of much comment prior to the questionnaire being issued and as a result these questions were asked.

How well does the PC publish its decisions - 4% felt they did very well whereas 48% felt they were Bad

Are you satisfied with the way the money is spent - 64% said they did not know how it was spent, 12% were dissatisfied and 24% were satisfied

Was sufficient publicity given to planning decisions affecting Hemsby - 77% considered that there was not sufficient publicity.

The Council was felt to be very secretive, mainly composed of newcomers or out-of-village people, with no information disseminated to the village. A major lack of communication! Obviously the one notice board is not sufficient.

Finally we asked what should be encouraged in and around Hemsby

In favour of Tourism 399 - against 214

Small business development - in favour 580 - against 108

Small scale industrial workshops - 363 in favour - 239 against

Regarding the Parish Council?

The majority of villagers seem to be in the dark about the workings and composition of the Parish Council - which is an issue needing urgent attention. There is a strong feeling in favour of various facilities needed on a 'residents only' basis - free from holidaymakers. There was a minority however who thought they did an excellent job.

- Do all the members on the Parish Council live in the Parish? It would be nice to know who is on the Council & who exactly they are, (leaflet with photos / background of people). How do we know when vacancies arise. Who & where do we write to when we need to ask or know something. The Parish Council seems to be a bit of a clique. Seems to be a closed forum. No one knows what they do or what they spend their money on
- Information office to be open longer and more often, not just in the summer period
- I would be interested in learning more about its operation etc and possible helping in some way to benefit the community and environment. I wish there was some kind of welcome pack for newcomers to the community
- Minutes of Council meetings should be displayed for public to read

Do you think sufficient publicity is given to planning applications that affect Hemsby?

- You never hear about anything until it happens

Should the following be encouraged in and around Hemsby?

Tourism development / attractions-

- Smarten up tourist areas. Make Hemsby more welcome to tourists with new welcome signs, planting. Improve Beach Road area

Small business development-

- Not on green field sites

Small scale industrial workshops-

- In considered locations only

Funding (Obtained from Question 57)

Your considered opinion was that Government grants 56%, Sponsorship 23.5% and Fundraising 20.5% should be the way we should proceed

Any other items for consideration (Obtained from Question 58)

- Would appreciate a village newsletter giving information on events and information on local services - businesses
- The green in front of Kingsway shops is an eyesore, the Parish Council office and Toilet look neglected and unwelcoming these should be improved and made more appealing to both locals and visitors.
- Resident policeman
- Traffic on Beach Road queue back to get into Pontins making a hazard to get past. Could Pontins be asked to move their barrier further into their grounds to avoid this backlog
- Would like a traffic warden or police presence at Pit Road on school mornings. As cars are parking on the pub car park and either driving out of Pit road the wrong way or reversing out. This is going to be a greater problem when Hemsby First School becomes a Primary School
- Worried about Quad bikes on Hemsby dunes near the Gap, they are destroying the Marrams and eroding our sea defences
- We have lived in Hemsby for almost 5yrs. We think it's a lovely village and we are very happy here. .
- A notice board for information and services outside the Post Office

ISSUES RAISED

Many of the major concerns raised fall outside our sphere of influence and require external advice and co-operation before anything can be addressed. Many of the issues you raised involved large projects. To try and influence these, they would need to be tackled one at a time. However some of the key issues you raised can be dealt with fairly quickly through constructive and accurate communication, so you can see some positive action taking place.

As a Steering Group we have targeted and prioritised your concerns. Some of your comments and questions will have been answered in this document.

We list below a brief summary of the MAIN issues that were raised, and the action we recommend be taken. A full and comprehensive list can be found at the end of this Parish Plan.

Housing

The main issue for many residents was the lack of communication and information regarding planning applications in the village, who influences them and how do we object. Also 59% of residents stated quite clearly that no further homes should be built in Hemsby and that our infrastructure could not sustain any more at present. However, some households (24%) said that if more were to be built, they would like to see small starter homes to allow young people to get onto the property ladder.

In the event that as a resident you would wish to object to a particular planning application you should note the following procedure:

1. Write an official letter of objection to the Dept. of Planning and Development, Maltings House, Malthouse Lane, Gorleston Great Yarmouth
2. Quote the planning reference number of the application and list your objections.
3. You must be aware however that objections will only be considered if they involve planning issues. Loss of amenities or other issues such as overloading the sewage system, causing traffic problems and stretching the resources of the school or medical facilities are not planning issues unless supported by the appropriate authority such as Anglian Water for sewage NCC Education Authority for school issues etc.

Lack of communication of village information.

42.5% of residents felt that there was a general lack of communication in the village in terms of events, clubs and activities.

48% felt that the Parish Council was poor in terms of information regarding the holding of meetings, the content and whether or not residents were allowed to attend.

We have considered ways in which information can be best disseminated. By analysing the statistics provided, 27% would like a Village Newsletter, 18% would like a Village Notice board and 13% would like a Village Internet website.

These suggestions for improvements in communications will be addressed by The Parish Council.

24% of residents expressed a wish to be able to swim locally and also have access to a gym facility.

Road Safety

Road Safety is one of the biggest areas of concern for Hemsby residents. Concerns cover roads, paths, pavements and danger spots in our village. The greatest depth of feeling concerned the Post Office cross roads (45%). Also linked to that area are stretches of roads with few or no pavements and very poor visibility.

39% would like to see the speed limits more rigorously enforced throughout the village. Also requested was parking restrictions extended on blind bends on and around the Medical centre on North Road.

29% would like to see a cycle path between Hemsby, Martham and Winterton.

Health care.

Many of our residents are very unhappy with the level of service given by our Medical Centre. 37.5% felt that the Triage System at the surgery was poor, with comments also being made regarding waiting times, the level of privacy at the reception desk.

Although patients are happy with the Doctors we see many complain of not seeing the same one on a regular basis.

465 residents expressed interest in having Blood Donor sessions locally and 383 would patronise Alternative Therapies if available.

Crime and antisocial behaviour.

A policing meeting was held in Hemsby village hall on September 6th 2004. This meeting, where all aspects of crime and policing were discussed, was widely advertised by the Steering Group in both the Yarmouth Mercury and The Advertiser.

From the questionnaire 62% of residents felt that the Police presence in Hemsby was poor so we were very surprised at the very low attendance at that meeting.

307 residents said they would like to be part of a Neighbourhood Watch scheme.

45% of our residents thankfully claimed they had not been affected by crime, however a large number are affected by nuisance crime i.e. 21% Vandalism and 13% Drunkenness. We can all try and influence this by helping the police and in turn try to deter the antisocial behaviour of a small minority.

All residents should be responsible for reporting any crime that affects them however small to help highlight the need for an increased police presence in the village. This in turn will identify any potential danger spots or key areas of concern.

Community Support Officers will be commencing duties in the area soon and will be based at Caister Police station.

Environment

63% of residents felt that the biggest issue to be addressed in the village was supply of dog fouling bins around the village.

41% were unhappy with the hygiene standards in the Kingsway public toilets.

89% said they would be prepared to recycle their waste if appropriate bins were provided and 59% raised the issue of vast amounts of litter.

It is the responsibility of all dog owners to ensure that your dog's pavement fouling is cleared immediately. Failure to do this can carry up to a £1000 on the spot fine. We would like to encourage other dog walkers to approach others who choose not to clear up after their dogs and politely offer a bag. Please ensure you have adequate bags when walking your dogs.

Request a visit to the village on a regular basis by the Environmental rangers who will spot check for dog fouling of the pavements and other environmental issues to ascertain the extent of the problem.

By now all residents will have received two wheelie bins, together with instructions on how to sort materials into general waste and recyclable waste.

There are 34 litter bins in our village and it is the responsibility of all residents to dispose of their litter in an environmentally friendly manner.

Compost bins are still available. Small at £5 and large at £12. Details from Tom Neate on Tel 0845 7300123.

CONCLUDING REMARKS

In line with the idea that we wanted the residents of the village to have a voice and be able to express their issues and concerns, we hope that this report has highlighted the key areas you would like addressed.

A proposed 'Action Plan' to make Hemsby "A Better Place To Live" is included in the report. It is hoped that some of the Steering group, aided by new members who have expressed an interest in helping make a difference, will form small action groups to support the Parish Council.

The Steering group have invited the Parish Council to adopt specific action points which will lead to a significant improvement in the quality of life for all our residents

Finally we would like to thank all the residents who through the completion of our questionnaire have provided us with an open, frank and honest view of what life is like in Hemsby and a thank you to all who have expressed a wish to help us go forward.

HEMSBY SIGNPOST

We have included services and groups that are within the Hemsby area or may be of interest. This list is not exhaustive so apologies to any that have been missed. We hope you will find it useful.

Local Amenities

Public Houses/Clubs

Hemsby Social Club, Waters Lane, Hemsby	733543
Kings Head, North Road, Hemsby	730568
Lacon Arms, Beach Road, Hemsby	730806
The Bell, The Street, Hemsby	730291

Eating Out

China Boy, Beach Road, Hemsby	730733
Don Luigi Restaurant, The Street, Hemsby	731557
Fish & Chip Shop, The Street, Hemsby	730397
Hong Kong Chinese, Kingsway, Hemsby	732449
Village Pizza, The Street, Hemsby	384476

Shops & Services

Allens Butchers, Pit Road, Hemsby	730275
Bakery, The Street, Hemsby	731749
Crossroads Garage, Hemsby	730317
The Craft Shop, The Avenue, Hemsby	731672
Esso Garage, Yarmouth Road, Hemsby	732834
Hemsby Pharmacy, Kingsway, Hemsby	731697
Katrina's Hairdressers, Kingsway, Hemsby	730115
Old Station House (B&B), North Road Hemsby	732022
Parklands Chalets, North Road, Hemsby	730445
Post Office, The Street, Hemsby	730210
Shimmers Tanning, Pit Road, Hemsby	730194
Spar Shop, Kingsway, Hemsby	732220
Teletronics, Ormesby Road, Hemsby	731429
Top Knot Hairdressers, North Road, Hemsby	732103
Vocalvale Alarms, Yarmouth Road, Hemsby	732575
Medical Centre, North Road, Hemsby	730449
Plummers Dentist, North Road, Hemsby	732433
Hemsby First School, School Loke, Hemsby	730364

Places of Worship

St. Mary's Church, The Street, Hemsby-Rev. Kichenside	393227
Methodist Church, Waters lane, Hemsby-Rev. Chris Shreeve	740237
Congregational Church, Yarmouth Road, Hemsby-Rev. Frank Little	732019

Transport

First Bus	855615
Door to Door Bus Service	332253
Car Link	
To Hire Community Connections Mini-Bus	656372

Recycling Facilities

Glass	Burial Ground Car Park Lacon Arms, Public House
Paper	Barn Room
Great Yarmouth Recycling Hot Line	846441

Clubs & Associations

Bingo	Marie	733061
	Joan	732041
Bowls	Dave Peacock	732915
Brownies	Marion Walsh	377496
Car Boot Sales	Bernie	655965
Connections Outreach	Robin Jolly	845400
Computer Club	Gt. Yarmouth College	655261
Cricket Club	Peter Eagle	733458
Country & Western	Jack Beck	604940
Dance Club	Jill Brian	731269
Explorers	Patricia Pearson	01692 536203
Hemsby Hornets	Mike Tingley	730594
Hornets	Noddy	733782
Hemsby Football Club	Keith	384464
Harlequins	Linda Eagle	733458
Hemsby Lifeboat	David Freeman	730962
Hemsby Scout Group	Patricia Pearson	01692 536203
IAG Outreach	Tom Molloy	01692 408209
Metal Detectors Club		393671
Mothers Union	Vera Powell	32609
Netball Squad	Jill Martin	393417
Rainbows	Marion Walsh	377496
Sports & Social Club	Mick Bowler	730111
St. Mary's Monday Club	Carol	730063
Tennis Courts	Norman Appleby	730965
Visually Impaired Club	Tom Deighton	731151
Water Colour Painting Classes	Adult Education	336324
Women's Institute	Marjorie Mingay	730198
Yoga-Four classes	Adult Education	336324
Youth Citizens Guild	Harry Day	732150
Youth Club	Bob Reynolds	731167
Youth in Mind Outreach	Sylvia Moore	842129

Room Hire

Barn Room	Bertie Murrell	730149
Pavilion (Playing Field)	Keith	384464
Village Hall	Lorraine Larner	384228

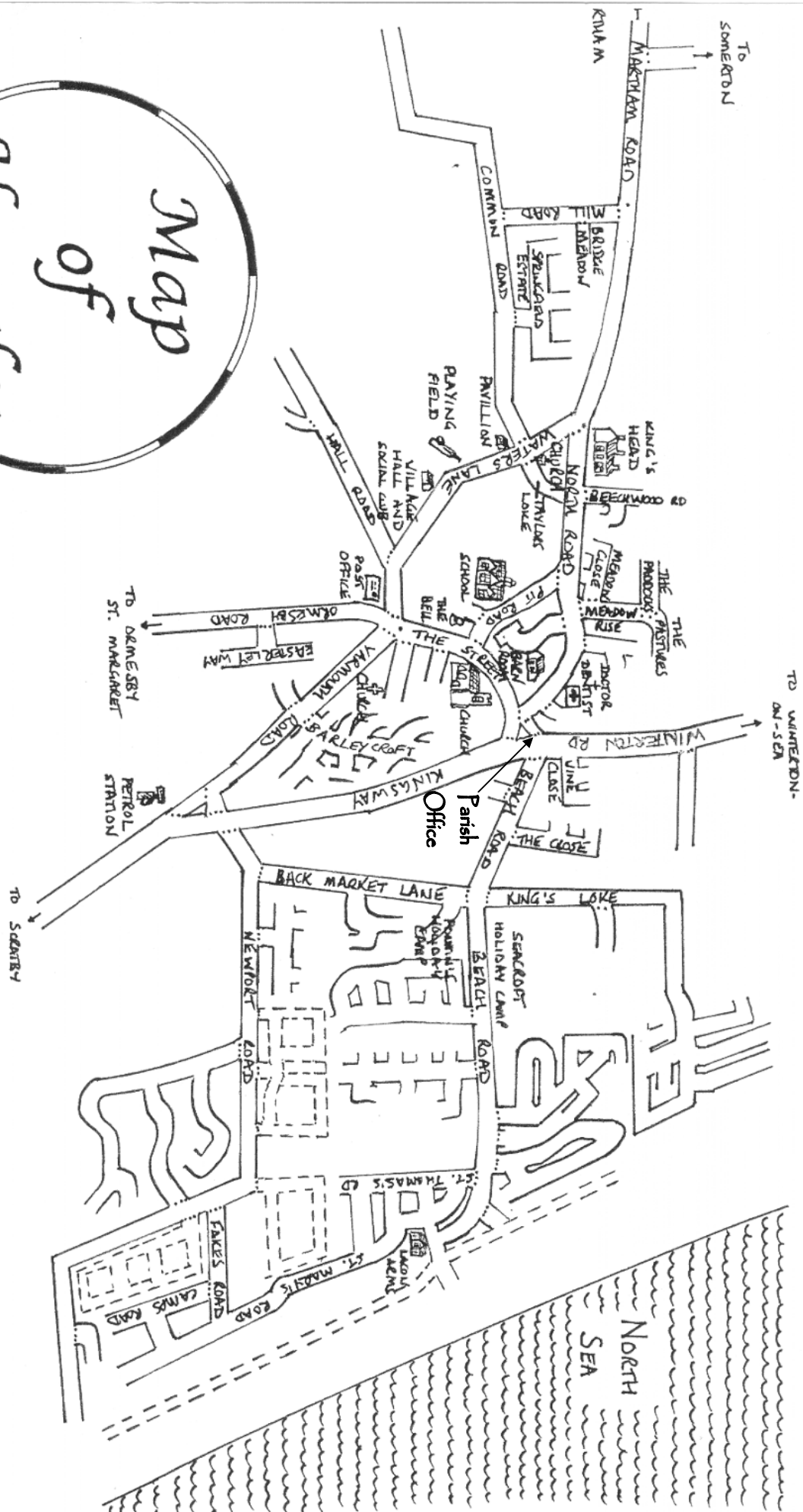
General Advice & Information

Alzheimer's Society		84451/662754
Books on Wheels		01603 222280
Care Faye (Frozen meals Delivery)		01603 436502
Carers Help line	(Freephone)	08008089876
Citizens Advice Bureau		856665
Citizens Advocacy Service		01362699261
Cruse Bereavement		440489
Furnishaid (Recycling old furniture)		331919
Handy Person (Safe at Home Scheme)		846190
Help The Aged	(Freephone)	0800650065
Hospice at Home		453604
Macmillan benefits Helpline (Freephone)		08008010304
Meals on Wheels (Hemsby Tues./Thurs.)		01692 670896
Norfolk Hearing Support		01603 440440
Norfolk Carers Benefits Advice Line	(Freephone)	08001720909
Welfare Rights (Town hall)		846222
Yceni (Furniture recycling, will collect)		842129
Your call (shop a yob hotline)		0845 6052222

Complementary Therapists

Ms.S.L.Tomasso - Scratby		732717
Zena Hayward - Hemsby		732395
Camellia Healing - Ormesby		733862
Ivy Club (Broadland Sports Club)		369651

Map of Hembsby



ACTION PLAN, HOW WE IMPLEMENT WHAT HAS COME OUT OF THE PARISH PLAN PROCESS

Key to Timescale: Short Term = less than 1 year, Medium Term = 2 to 3 years, Long Term = 4 to 5 years

PROPOSED ACTION	RESPONSIBILITY	LEADER	TIMESCALE	FUNDING SOURCE
HOUSING				
Better communication with village residents regarding proposed planning applications	Parish Council and GYBC.	Parish Council	Short Term	Parish Council
Encourage residents to attend Planning meetings, where affected by specific applications.	Residents and Parish Council	Parish Council	Short Term	Not Applicable
Minimize future volume building & encourage provision of starter homes	Parish Council, GYBC & Developers.	Parish Council	Long Term	Not Applicable
HEALTH CARE				
Improvement to Patient administration procedures at Medical Centre.	Practice manager Coastal Village Practices	Parish Council	Medium Term	PCT
Concerns regarding Medical centre to be given to Social Forum for action as necessary.	Social Forum	CLIP	Short Term	Not Applicable
Blood Donor sessions in village	NHS Blood Donor Organisation	Parish Council	Medium Term	NHS
Source Chiroprapist for Residents		Parish Council	Short Term	NHS or Private as applicable
Public meeting with Practice Manager to discuss areas for improvement	Parish Council	Parish Council	Short Term	Not Applicable
The findings from the questionnaire on the Medical services will be forwarded to the Community Empowerment Network who have the ability to direct your comments through the appropriate channels and address them	Steering Group	CLIP	Short Term	Not Applicable

PROPOSED ACTION	RESPONSIBILITY	LEADER	TIMESCALE	FUNDING SOURCE
CRIME & ANTI SOCIAL BEHAVIOR				
Additional Homewatch areas Homewatch packs are available from the CLIP office in Martham. Pat Bailey is the Crime Prevention Officer and can be contacted at Yarmouth Police Station.	Residents of areas wishing to take part	Parish Council and Action Group	Ongoing	Not Applicable
Parish Council to have closer liaison with police to increase awareness.	Parish Council and Norfolk Constabulary	Parish Council	Ongoing	Not Applicable
Publicise visits of Mobile policing Unit. All residents are encouraged to talk with this mobile unit regarding any issues or concerns they may have to increase the awareness in the village.	Norfolk Constabulary and Parish Council	Parish Council	Short Term	Not Applicable
Publicise appointment of Community Support Officers for this area.	Parish Council and Norfolk Constabulary	Parish Council	Short Term	Not Applicable
Your Call - shop a job hotline		Residents responsibility	Ongoing	Not Applicable
ENVIRONMENT & LEISURE				
Cleanliness of Kingsway Public Toilets. The Parish Council have informed us that the Public Toilets are cleaned on a regular basis. If you have any issues please contact the Parish Council.	Parish Council,	Residents to inform Parish Council of any issues.	Short Term	Parish Council
Request that Environmental Rangers visit Hemsby to check on dog fouling	GYBC Parish Council.	Residents	Ongoing	Not Applicable

PROPOSED ACTION	RESPONSIBILITY	LEADER	TIMESCALE	FUNDING SOURCE
Publicise Hemsby recycling points.	Parish Council	Parish Council	Short Term	Not Applicable
Liaise with Sporting Club for provision of Swimming, Gym facilities, additional Tennis Courts & other recreational needs etc.		Residents / Action Group	Long Term	Not Applicable
Sound out support for a 'Carnival' or 'Village Fete' day	Parish Council	Residents / Action Group	Long Term	Not Applicable
Liaise with residents of properties backing onto Kingsway and with Pontins to improve the visual impact on entrance to village	Parish Council letters	Residents / Action Group	Ongoing	Not Applicable
There are 34 litter bins in our village and it is the responsibility of all residents to dispose of their litter in an environmentally friendly manner.				

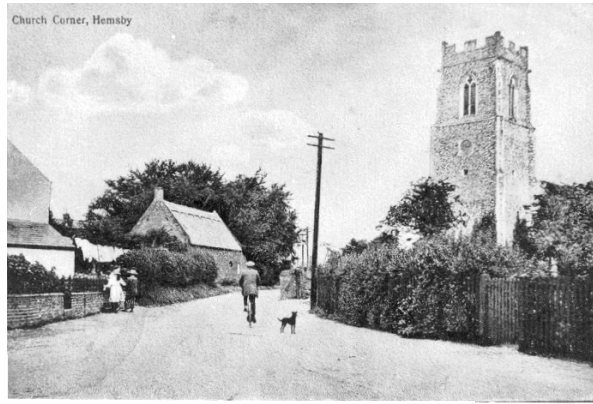
ROAD SAFETY

Improvements to pavement areas around Post Office & Hall road area.	Parish council, GYBC,	Parish Council	Medium Term	Highways Agency
Improvement to visibility & possibility of round about at P.O. cross roads.	Parish Council, Norfolk Highways, Local businesses in vicinity.	Parish Council	Medium Term	Highways Agency
Regular speed checks by Police on main roads into village	Norfolk Constabulary	Parish Council	Ongoing	Norfolk Constabulary
Extend the start of 30mph speed limit to the Martham side of old railway bridge on entrance to village	Highways Authority, Norfolk Constabulary and Parish Council	Parish Council	Medium Term	Highways Agency
Liaise with other Parish Council to discuss funding possibilities for cycle path between Hemsby, Martham and Winterton.	Parish Council	Parish Council	Long Term	To be advised

PROPOSED ACTION	RESPONSIBILITY	LEADER	TIMESCALE	FUNDING SOURCE
Mark out Burial Ground car park to facilitate full use of parking area, thus reducing car parking on North Road outside Health Centre	Parish Council	Parish Council	Short Term	Parish Council
Liaise with Pontins to see if the entrance barrier could be moved further into their driveway to relieve build up of traffic on Beach Road during holiday peak weeks.	Pontins	Parish Council	Short Term	Pontins
Push for Taylors Loke to be made 'One Way'.	Parish Council and Highways Authority	Parish Council	Medium Term	Highways Agency
TRANSPORT				
Ensure awareness of Care share scheme	Parish Council	Parish Council Newsletter CLIP Action Group	Short Term	Not Applicable
Approach major stores in Gt. Yarmouth, i.e.. Sainsbury, Tesco, Asda, Town Centre management etc. for provision of or subsidy for a Shoppers Bus.	Parish Council		Short Term	Not Applicable
INFORMATION				
Improvement in the way Parish Council, and other village information is disseminated - by means of a 'Village News letter', Internet, Strategically placed notice boards, Local newspapers, etc.	Parish Council	Parish Council	Short Term	Parish Council
<i>As a group we would like to encourage any residents who wish to set up a new club or activity and we would support the venture in terms of communication to the village.</i>		Residents	Ongoing	Not Applicable
Install Village notice board at Village Hall	Parish Council	Parish Council	Short Term	Parish Council



BEACH ROAD



CHURCH CORNER



POST OFFICE



YARMOUTH ROAD



THE STREET



THE VALLEY-NEWPORT

**HEMSBY OF
YESTERYEAR**



NEWPORT



OLD HALL



BEACH ROAD



CHURCH CORNER



POST OFFICE



YARMOUTH ROAD



THE STREET



THE VALLEY NEWPORT

HEMSBY TODAY



NEWPORT COTTAGES

THE OLD HALL
WAS DESTROYED
BY FIRE